

**VIA GIUSEPPE LA MASA 19  
20156 MILANO**



## by AEROPLANE



Milan is easily reachable from **THREE INTERNATIONAL AIRPORTS**: **MILANO LINATE** (near to the downtown), **MILANO MALPENSA** (40 km) and **ORIO AL SERIO** (50 km, near to Bergamo). Together they ensure frequent domestic and international connections.

### Milano Malpensa

**MALPENSA** is the largest airport in the Milanese area and it has two terminals at its disposal that ensure domestic and International connections, as well as numerous intercontinental flights. The airport is well connected with the Lombard capital. The journey takes roughly one hour by car on the A8 autostrada (motorway). There are also shuttle services (Malpensa Bus Express, Malpensa Shuttle Air Pullman) that connect it with Stazione Centrale (Central Station) and Linate Airport. It is also connected by train to the downtown to Cadorna station (Malpensa Express Ferrovie Nord Milano).

**FROM MALPENSA TO ISTITUTO MARIO NEGRI**: take the train called **MALPENSA EXPRESS** (price for one-way ticket is 11 euros) to the downtown: get off at the station **MILANO NORD BOVISA POLITECNICO**, which is very close to the Istituto Mario Negri.

Exiting the Bovisa Politecnico station you should take the stairs on the right and reach the main road. Take the left and follow the road, then take the first road on the right. After 100 m. take the first road on the left and the Istituto Mario Negri will be right in front of you (5 minutes walk).



Malpensa Express



Trenord - Ferrovie Nord Milano

<http://www.milanomalpensa1.eu/en>

<http://www.milanomalpensa2.eu/en>

### Milano Linate

**LINATE** is a city airport, very close to the centre. In just a few minutes passengers can arrive in Piazza San Babila with the urban bus line number 73. Linate is also serviced by private shuttle buses that link the airport with Stazi-

one Centrale (Central Station), Fiera Milano city, Rho fair centre and also Malpensa airport (Starfly, Air Pullman Noleggi, and Malpensa Shuttle Air Pullman).

**FROM LINATE TO ISTITUTO MARIO NEGRI**: you can use **TAXI** or **BUS 73** to Piazza San Babila, in the centre of Milan, where you can take the **UNDERGROUND LINE 1** (also called **RED LINE**; price for a ticket is 1.5 euros and the ticket is valid for 90 minutes after first usage, also on suburban railways) to the **CADORNA** railway station. All trains leaving Cadorna station stop at the **MILANO NORD BOVISA POLITECNICO STATION** (see the box above for indications from this stop to Istituto Mario Negri).



Bus 73 and X73 Linate Express to Linate Airport



Underground Line 1



Suburban railways from Cadorna Station

<http://www.milanolate.eu/en>



## HOW TO GET MILAN



by AEROPLANE



**ORIO AL SERIO** approximately one hour's travel from Milan, is well connected with the city centre. It can be reached by car in autostrada (motorway) Milano-Venezia A4 or by shuttle bus (Autostradale, Locatelli Air Pullman) that connects it with Stazione Centrale (Central Station), Milan. For those that arrive or depart in train, Bergamo's Stazione Centrale can be reached using buses that depart every ten minutes to and from the airport.

**FROM ORIO AL SERIO TO ISTITUTO MARIO NEGRI:** take a SHUTTLE BUS to the STAZIONE CENTRALE, from where you can use the UNDERGROUND LINE 2 (also called GREEN LINE; price for a ticket is 1.5 euros and the ticket is valid for 90 minutes after first use, also on Trenord - Ferrovie Nord Milano railways) to get the CADORNA railway station. Then, to reach the istituto Mario Negri, take a train to the MILANO NORD BOVISA POLITECNICO STATION (see the Malpensa box above for indications from this stop to Istituto Mario Negri).



Bus service to Orio al Serio Airport



Underground Line 2



Suburban railways from Cadorna Station

<http://www.sacbo.it/Airpor/portalProcess.jsp?languageID=2>

by TRAIN



Milan has numerous railway stations at its disposal, the most important being CENTRALE, LAMBRATE and GARIBALDI. From **STAZIONE CENTRALE** (Central Station) trains depart for all Italian and European destinations, while the others function as an important hub for regional services.

Furthermore, in the middle of the city, beside Castello Sforzesco (Sforza Castle), there is **CADORNA STATION**. It is managed by the Ferrovie Nord group and represents an important regional railway siding.

This network, also used by the **PASSANTE FERROVIARIO**, which functions in a similar manner to an urban underground line and services numerous underground stations in the centre of Milan, such as Repubblica and Garibaldi Passante.

Moreover, it connects the city with important tourist locations and the international airport Malpensa. With the Trenord railway, trains run to Como station, just a short distance from the lake, as well as Canzo in upper Brianza, Varese and Laveno on Lake Maggiore.



Passante Ferroviario



by TRAIN



**FROM CADORNA STATION TO ISTITUTO MARIO NEGRI:** take a train (price for a ticket is 1.5 euros) to the MILANO NORD BOVISA POLITECNICO STATION, which is very close to the Istituto Mario Negri. All trains leaving Cadorna station stop there. Exiting the Bovisa Politecnico stop you should take the stairs on the right and reach the main road. Take the left and follow the road, then take the first road on the right. After 100 m. take the first road on the left and the Istituto Mario Negri will be right in front of you (5 minutes walk).



S3

S4

Suburban railways from Cadorna Station

<http://www.trenord.it/it-IT/>

**FROM CENTRAL STATION TO ISTITUTO MARIO NEGRI:** take the UNDERGROUND LINE 2 (also called GREEN LINE; price for a ticket is 1.5 euros and the ticket is valid for 90 minutes after first use, also on Trenord - Ferrovie Nord Milano railways) to get the CADORNA railway station. Then, to reach the Istituto Mario Negri, take a train to the MILANO NORD BOVISA POLITECNICO STATION (see above).



Underground Line 2



S3

S4

Suburban railways from Cadorna Station

<http://www.atm-mi.it/en>  
<http://www.trenord.it/it-IT/>

## IF YOU ALREADY ARE IN MILAN

The easiest way to get the Istituto Mario Negri is taking a train (price for a ticket is 1.5 euros) **from CADORNA STATION to the MILANO NORD BOVISA POLITECNICO STATION**. All trains leaving Cadorna station stop there. Exiting the Bovisa Politecnico stop you should take the stairs on the right and reach the main road. Take the left and follow the road, then take the first road on the right. After 100 m. take the first road on the left and the Istituto Mario Negri will be right in front of you (5 minutes walk).



S3

S4

Suburban railways from Cadorna Station

In alternative, you can take a train **from GARIBALDI STATION to the MILANO NORD BOVISA POLITECNICO STATION** using the PASSANTE FERROVIARIO, which is similar to an urban underground line.



S1

S2

S10

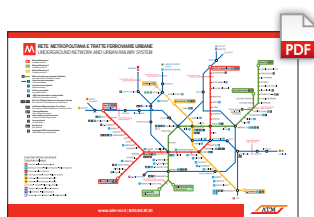
Suburban railways from Garibaldi Station

<http://www.atm-mi.it/en>  
<http://www.trenord.it/it-IT/>

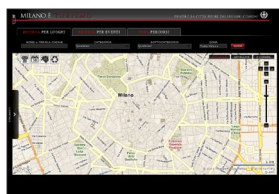
## LINKS and ADDITIONAL INFO

- **MALPENSA EXPRESS** | Train from Malpensa Airport to Milan downtown
- **TRENORD - FERROVIE NORD MILANO** | Train timetables from Cadorna Station to Bovisa Station
- **ATM MILANO** | Urban bus, subway and other public transports in Milan
- **FERROVIE DELLO STATO ITALIANE** | General information on Italian railway connections

## ON-LINE MAPS FOR DOWNLOAD



Underground network and urban railway system



Interactive map from the Milan Tourism web portal



M1

Underground Line 1



M2

Underground Line 2



M3

Underground Line 3



Suburban Railway 1 Interactive map | Saronno - Milano Passante - Lodi



Suburban Railway 2 Interactive map | Mariano Comense - Milano Passante - Milano Rogoredo



Suburban Railway 3 Interactive map | Saronno - Milano Cadorna



Suburban Railway 4 Interactive map | Camnago Lentate - Seveso - Milano Cadorna



Suburban Railway 5 Interactive map | Varese - Milano Passante - Treviglio



Suburban Railway 6 Interactive map | Novara - Milano Passante - Treviglio



Suburban Railway 8 map | Lecco - Carnate - Milano P.ta Garibaldi



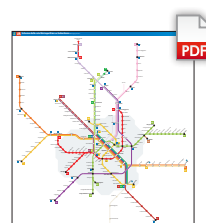
Suburban Railway 9 Interactive map | Seregno - Monza - Milano S. Cristoforo



Suburban Railway 10 map | Milano Bovisa - Milano Rogoredo



Suburban Railway 11 Interactive map | Chiasso - Como S. Giovanni - Milano P.ta Garibaldi



Urban and Suburban transport scheme



Lombardy Railway system interactive scheme



Passante Ferroviario map (common path for S1, S2, S5, S6 and S10)

## Suggested HOTELS

IN WALKING DISTANCE  
up to 1500 m.

1

**HOTEL VALGANNA**

★ ★ ★

Via Giovanni Battista Varè, 32  
20158 Milano



5-10 minutes from the venue

Web: <http://www.hotelvalganna.it>  
e-mail: [info@hotelvalganna.it](mailto:info@hotelvalganna.it)  
phone: +39-02-39310089  
fax: +39-02-39312566

Price for Istituto Mario Negri  
Single room: 82 EUR  
Double Single Use: 110 EUR  
Double room: 120 EUR

2

**HOTEL SUNFLOWER**

★ ★ ★ ★

Piazzale Lugano, 10  
20158 Milano



15-20 minutes from the venue

Web: <http://www.hotelsunflower.it>  
e-mail: [sunflower.hotel@tiscali.it](mailto:sunflower.hotel@tiscali.it)  
phone: +39-02-39314071  
fax: +39-02-39320377

Price for Istituto Mario Negri  
Single room: 95 EUR  
Double Single Use: 100 EUR  
Double room: 130 EUR

3

**RADISSON BLU HOTEL**

★ ★ ★ ★

Via Villapizzone, 24  
20156 Milano



15-20 minutes from the venue

Web: <http://www.radissonblu.com/hotel-milan>  
e-mail: [reservations.milan@radissonblu.com](mailto:reservations.milan@radissonblu.com)  
phone: +39-02-36318044  
fax: +39-02-36318049

Price for Istituto Mario Negri  
Double Single Use: 110 EUR  
Double room: 110 EUR

4

**BEST WESTERN HOTEL MILTON MILANO**

★ ★ ★ ★

Via Enrico Annibale Butti, 9  
20158 Milano



25-30 minutes from the venue

Web: <http://www.miltonmilano.it>  
e-mail: [miltonmilano.mi@bestwestern.it](mailto:miltonmilano.mi@bestwestern.it)  
phone: +39-02-66802366  
fax: +39-02-66802909

Price for Istituto Mario Negri  
Double Single Use: 103 EUR  
Double room: 128 EUR

## Suggested HOTELS

### PUBLIC TRANSPORT NEEDED

Trenord - FNM Railways

5

### ENTERPRISE HOTEL



Corso Sempione, 91  
20149 Milano



Train from Domodossola Fiera Station  
to Bovisa Politecnico Station

Web: <http://www.enterprisehotel.com>  
e-mail: [booking@enterprisehotel.com](mailto:booking@enterprisehotel.com)  
phone: +39 02 31818.888  
fax: +39 02 31818.868

Price for Istituto Mario Negri  
Double Single Use: 149 EUR  
Double room: 169 EUR

6

### HOTEL NASCO



Corso Sempione, 69  
20149 Milano



Train from Domodossola Fiera Station  
to Bovisa Politecnico Station

Web: <http://www.hotelnascomilano.it>  
e-mail: [prenotazioni@hotelnascomilano.it](mailto:prenotazioni@hotelnascomilano.it)  
phone: +39-02-31951  
fax: +39-02-31952777

Price for Istituto Mario Negri  
Single room: 80 EUR  
Double Single Use: 85 EUR  
Double room: 115 EUR

7

### HOTEL POLIZIANO FIERA



Via Angelo Poliziano, 11  
20154 Milano



Train from Domodossola Fiera Station  
to Bovisa Politecnico Station

Web: <http://www.hotelpolizianofiera.it>  
e-mail: [info.hotelpolizianofiera@adihotels.com](mailto:info.hotelpolizianofiera@adihotels.com)  
phone: +39-02-3191911  
fax: +39-02-67411202

Price for Istituto Mario Negri  
Double Single Use: 110 EUR





## Suggested HOTELS

**PUBLIC TRANSPORT NEEDED**  
**Trenord - FNM Railways**

8

**HOTEL MOZART**

★★★★

**Piazza Gerusalemme, 6**  
**20154 Milano**Train from Domodossola Fiera Station  
to Bovisa Politecnico Station**Web:** <http://www.hotelmozartmilan.com>  
**e-mail:** [info@hotelmozartmilan.com](mailto:info@hotelmozartmilan.com)  
**phone:** +39-02-33104215  
**fax:** +39-02-33103231Price for Istituto Mario Negri  
Single room: 88 EUR  
Double Single Use: 99 EUR  
Double room: 115 EUR

9

**HOTEL JOHNNY**

★★★

**Via Giovanni Prati, 6**  
**20145 Milano**Train from Domodossola Fiera Station  
to Bovisa Politecnico Station**Web:** <http://www.hoteljohnny.com/en>  
**e-mail:** [info@hoteljohnny.com](mailto:info@hoteljohnny.com)  
**phone:** +39-02-341812  
**fax:** +39-02-33610521Price for Istituto Mario Negri  
Single room: 67 EUR  
Double Single Use: 80 EUR

10

**HOTEL PICCOLO**

★★

**Via Piero della Francesca, 60**  
**20154 Milano**Train from Domodossola Fiera Station  
to Bovisa Politecnico Station**Web:** <http://www.piccolohotelmilano.it>  
**e-mail:** [piccolohotel@libero.it](mailto:piccolohotel@libero.it)  
**phone:** +39-02-33601775/33601776  
**fax:** +39-02-33601756Price for Istituto Mario Negri  
Single room: 60 EUR  
Double Single Use: 80 EUR



## Suggested HOTELS

### PUBLIC TRANSPORT NEEDED

Underground +  
Trenord - FNM Railways

#### 11 HOTEL TIZIANO



Via Tiziano, 6  
20145 Milano



Underground Line 1 (Buonarroti stop)  
to Cadorna Station + Train  
to Bovisa Politecnico Station

Web: <http://www.minihotel.it/tiziano.htm>  
e-mail: [tiziano@minihotel.it](mailto:tiziano@minihotel.it)  
phone: +39-02-4699035  
fax: +39-02-4812153

Price for Istituto Mario Negri  
Single room: 78 EUR  
Double Single Use: 94 EUR

#### 12 HOTEL AMBASCIATORI



Galleria del Corso, 3  
20122 Milano



Underground Line 1 (Duomo or  
San Babila stop) to Cadorna Station  
+ Train to Bovisa Politecnico Station

Web: <http://www.ambasciatorihotel.it>  
e-mail: [info@ambasciatorihotel.it](mailto:info@ambasciatorihotel.it)  
phone: +39-02-76020241  
fax: +39-02-782700

Price for Istituto Mario Negri  
Single room: 135 EUR  
Double Single Use: 155 EUR

## RESERVATION

Please remember to ask for the price reserved to Istituto Mario Negri or, in alternative, for the best quotation for the selected period. The prices indicated are valid only for periods without events at the Milan Fair.



Find hotel location on map powered by Bing™ Maps

## HOTELS OVERVIEW



## ADDITIONAL INFO



## TOURIST INFORMATION

If you need further and up-to-date information about services, transports, maps, hotels, restaurants, tourism and entertainment, monuments and museums, art exhibitions and cultural events in Milan, please consult the following websites:

<http://www.turismo.comune.milano.it/>

Official website of the Milan Tourism Office



<http://milan.arounder.com/>

An overall virtual tour of Milan

